

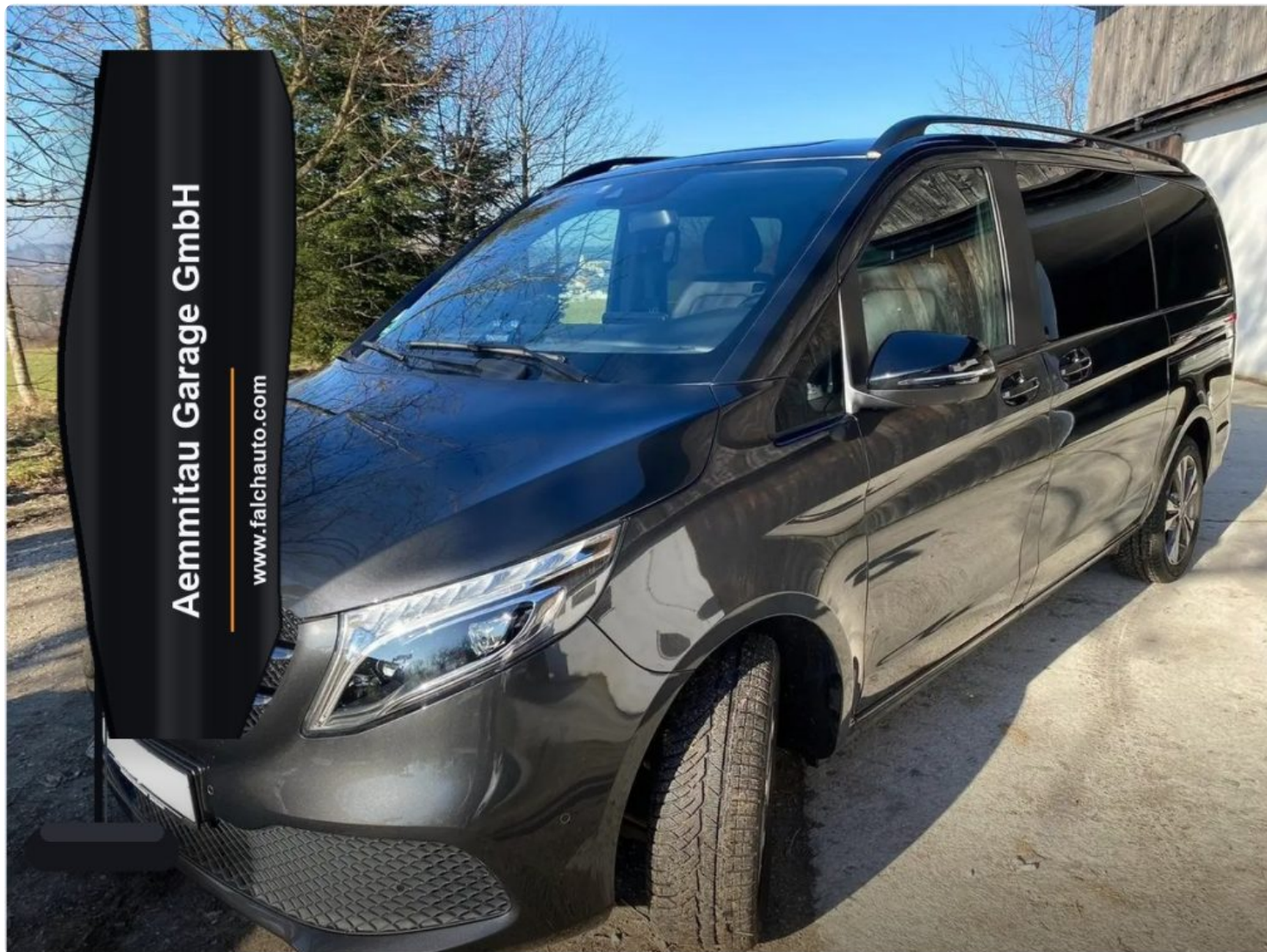
Vehicle Add ID 42145

Available

Used

Mercedes-Benz V 300 d lang 4Matic 9G-TRONIC Avantgarde

Mercedes-Benz V 300 d lang 4Matic 9G-TRONIC Avantgarde



50'500 EUR

Incl. VAT · Net —

Overview

Vehicle Add ID	42145
Status	Available
Condition	Used
Registration country	Germany
Brand	Mercedes-Benz
Model	V 300
Version	d lang 4Matic 9G-TRONIC Avantgarde
VIN	W1V44781313987311
Stock number	42145

Technical Details

Mileage	44,613 km
First registration	2022-03
Year	2022
Fuel	Diesel
Transmission	Automatic
Power	174 kW / 237 HP
Color	Black
Doors	5
Seats	7
Body type	Van / Minibus
Drive type	All-wheel drive / 4x4
Emission class	Euro 6d
CO2 emissions	218
Fuel consumption	8,8

Description

Mercedes-Benz V-Class V 300 d long

This Mercedes-Benz V-Class V 300 d long combines premium comfort, advanced technology, and a refined design with permanent all-wheel drive. With a wheelbase of 3,200 mm, a gross vehicle weight of 3,100 kg, and an output of 174 kW (237 hp), it offers spaciousness, performance, and versatility at a high level. The vehicle is finished in elegant graphite grey metallic dark (MB 7831).

Packages and variants

- Parking Package with 360° camera
- Mirror Package
- Lane Package
- Exterior Sport Package
- Interior Lighting Package
- BlueEFFICIENCY Package
- Interior Design Package
- Seat Comfort Package
- Bed Package
- Night Package
- Registration Certificate Part II
- Registered as passenger car

Chassis and driving dynamics

- Electric steering
- Disc brakes on front and rear axle
- Electric parking brake
- Active Brake Assist
- CO₂-optimized braking system
- Brake calipers with Mercedes-Benz lettering
- AIRMATIC air suspension
- Comfort summer tires 245/45 R18
- 18-inch light-alloy wheels in 5-twin-spoke design
- Wireless tire pressure monitoring on front and rear axle

Engine and transmission

- 174 kW (237 hp) at 4,200 rpm
- OM654 DE 20 LA engine, output level 5 Top Type
- Emission standard Euro 6d for M1/N1 Group II

- Generator management
- ECO start-stop function
- 9G-TRONIC automatic transmission
- Permanent all-wheel drive
- Main fuel tank with 70-liter capacity

Body and exterior equipment

- Roof rails
- Exterior mirrors painted black, electrically adjustable, foldable and heated, with integrated indicators
- Automatically dimming interior and exterior mirrors
- Headlamp range adjustment
- Removable trailer coupling with towing capacity of 2,500 kg
- LED Intelligent Light System
- High Beam Assist PLUS
- Third brake light
- LED tail, brake and indicator lights
- Luggage compartment light
- Comfort overhead control panel
- Exit lights, ambient lighting in exterior mirrors, rear lighting with reading spots, front footwell lighting
- Ambient cockpit lighting
- Adaptive brake light
- Active sliding door retention system
- Sliding doors on both sides
- Child safety locks in passenger compartment doors
- Separately opening rear window and EASY-PACK tailgate
- Illuminated Mercedes-Benz door sill lettering
- Entry assist grab handle
- Fixed front side windows left and right in sidewall/sliding door
- Electric comfort window lifters for driver and front passenger
- Electrically operated rear vent windows in passenger compartment
- Heated washer system
- Illuminated vanity mirrors
- Heat-insulating glass all around
- Dark-tinted rear glass
- Bumpers and add-on parts painted in body color
- Black-painted radiator grille
- Aerodynamics Package
- Screw-in towing eye front and rear

Interior, heating and climate comfort

- Driver seat with seat heating, seat cushion depth adjustment, lumbar support and seat belt warning system
- Swiveling comfort driver seat
- Front passenger seat with seat heating, seat cushion depth adjustment and lumbar support
- Swiveling comfort front passenger seat
- Individual seats in first row on left and right
- 3-seat bench in second rear row with comfort bed function
- Storage nets on driver and front passenger seat backrests
- Armrests for passenger compartment seating
- Seat rail system with quick-locking function
- Airbags, thorax-pelvis sidebags and windowbags for driver and front passenger
- Seat belt warning for front passenger seat
- Lockable glove compartment
- Center console with 1-DIN slot
- Black roof trim and headliner
- Carpet flooring in front interior area
- Leather steering wheel
- Decorative trim in double-stripe design

- Carpet flooring in rear compartment
- Rear grab handle, first-aid kit and warning triangle
- Auxiliary hot-water heater and electric booster heater
- Auxiliary warm-air heater with air duct to passenger compartment
- THERMOTRONIC automatic climate control and semi-automatic TEMPMATIC air conditioning in the rear

Infotainment, instruments and electrical equipment

- Digital radio (DAB)
- Navigation system
- 10.25-inch display with touchpad
- Smartphone Integration Package
- MBUX multimedia system Mid
- Navigation pre-installation
- Two-way speakers in front and rear
- 3 years of free map data updates
- Additional battery for retrofit consumers
- Buffer battery for starting process and isolating relay for additional battery
- 12 V 92 Ah fleece battery
- 14 V / 250 A generator
- 12 V sockets in the cabin, luggage compartment and rear seat rows on both sides
- Electronic tachometer
- ASSYST service interval indicator
- PARKTRONIC
- Warning lamp for washer fluid level
- Steering wheel adjustable for height and reach
- Multifunction steering wheel with trip computer
- Outside temperature display
- Blind Spot Assist, Crosswind Assist and rain sensor
- LTE communication module for digital services
- Instrument cluster with color display
- 360° camera
- Lane Keeping Assist
- ATTENTION ASSIST
- Service interval of 40,000 km
- Automatic driving light assistant
- Comfort opening and closing with infrared remote control
- Electronic key in chrome design
- Immobilizer
- Hill Start Assist
- Active Distance Assist DISTRONIC

Additional equipment

- Sport pedals
- SCR emissions control, generation 4

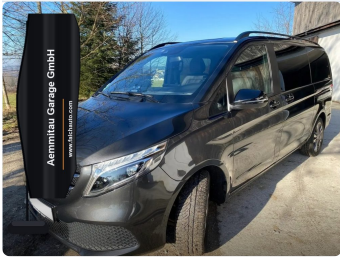
Connectivity solutions

- Pre-installation for Remote Services Plus
- Live Traffic Information
- Mercedes-Benz emergency call system
- Breakdown management

Upholstery

Lugano black leather

Gallery



Trust & Benefits

- Free delivery anywhere in Switzerland
- 12-month company guarantee
- 14-day return period according to our terms

This vehicle is located in our park in Müstair, 7537 Val Müstair, Kanton Graubünden. Includes free delivery anywhere in Switzerland, a 12-month guarantee provided by Aemmitau Garage GmbH, and a 14-day return period according to our terms.